

# SAILING INSTRUCTIONS



## Incorporating:

- 470 Oceania Championships
- Australian Para Sailing Championships
- iQFOiL Australian Championships
- RS100 Victorian Championships
- 2.4mR Victorian Championships

**Organising Authority: Royal Brighton Yacht Club on behalf of  
Australian Sailing**

With support from Victorian partner clubs:  
Black Rock Yacht Club (BRYC), Mordialloc Sailing Club (MSC)  
Royal Yacht Club of Victoria (RYCV), Royal Melbourne Yacht Squadron (RMYS)

Version 0

## 1 CHANGES TO SAILING INSTRUCTIONS

- 1.1 Any change to the sailing instructions will be posted before 0900 on the day it will take effect, except that any changes to the format or schedule of races will be posted on the [Official Notice Board](#) (ONB) by 2000 on the day before it will take effect.
- 1.2 Any reassignment of classes to course areas will be posted before 0900 on the day it will take effect, or if flag AP is displayed ashore, 30 minutes before flag AP for that class is removed.
- 1.3 When any SI Addendum is changed, an updated version of it will be posted on the Official Notice Board.

## 2 COMMUNICATIONS WITH COMPETITORS

- 2.1 The [Official Notice Board](#) will be an online notice board located at [www.sailmelbourne.com.au](http://www.sailmelbourne.com.au). All protests, scoring enquiries, equipment and crew change requests shall be submitted via the ONB and resulting notices posted online.
- 2.2 **[DP]** When flags AP over H are displayed from a race committee vessel, races not started are *postponed* and those boats shall immediately return ashore and wait there for further signals. When flags N over H are displayed from a race committee vessel, all races are *abandoned* and all boats shall immediately return ashore and wait there for further signals. This changes Race Signals AP over H and N over H.

## 3 CODE OF CONDUCT

- 3.1 **[DP]** Competitors and support persons shall comply with reasonable requests from race officials.

## 4 SIGNALS MADE ASHORE

- 4.1 Signals made ashore will be displayed at the flag masts at Royal Brighton Yacht Club boat park.
- 4.2 When flag AP is displayed ashore, '1 minute' is replaced with 'not less than 30 minutes' in the race signal AP. This changes race signal AP.
- 4.3 **[DP]** Flag D displayed ashore means 'Boats shall not leave the harbour until this signal is made.' This adds to Race Signals. The warning signal will not be made before the scheduled time or less than 30 minutes after Flag D is displayed.
- 4.4 Signals made ashore may also be posted on the Official Notice Board.

## 5 SCHEDULE OF RACES

- 5.1 The total number of races scheduled is as per the Event Schedule NOR Attachment A. One extra race per day may be sailed, provided that no fleet becomes more than one race ahead of schedule.
- 5.2 The daily race schedule and the scheduled time of the warning signal for the first race is shown at Addendum B. The scheduled time of the first warning signal for subsequent days will be promulgated as a Notice to Competitors on the ONB.
- 5.3 The warning signal for each succeeding race will be made as soon as practicable after the completion of the previous race.
- 5.4 To alert boats that a race or sequence of races will begin soon, the orange starting line flag will be displayed with one sound at least five minutes before a warning signal is displayed. This changes RRS Race Signals.

## 6 CLASS FLAGS

6.1 See SI Addendum D

## 7 RACING AREAS

7.1 See SI Addendum C.

## 8 COURSES

- 8.1 The diagrams in SI Addendum D show the courses, the course designations, the order in which marks are to be passed, and the side on which each mark is to be left.
- 8.2 No later than the warning signal, the race committee signal vessel will display the course designation if required and may display the approximate compass bearing of the first leg.
- 8.3 If one of the gates marks is not laid, then the laid mark shall be left to port.

## 9 MARKS

9.1 See SI Addendum D.

## 10 THE START

- 10.1 Class fleets may be started in any order, and some class fleets may be started together.
- 10.2 The starting line will be between a staff displaying an orange flag on the race committee vessel at the starboard end and either:
- the course side of the port-end inflatable starting mark, or
  - a staff displaying an orange flag on the race committee vessel at the port end.
- 10.3 **[DP]** Boats whose warning signal has not been made shall avoid the starting area during the starting sequence for other classes. The starting area is defined as a rectangle 50 meters from the starting line and marks in all directions.
- 10.4 A boat that does not start within 4 minutes after her starting signal, or for Delta course 3 minutes, will be scored Did Not Start without a hearing. This changes RRS 35, Appendix A5.1 and Appendix A5.2.
- 10.5 iQFOiL/Formula Kite races will be started by using the following signals. Times shall be taken from the visual signals - the absence of a sound signal shall be disregarded. This changes RRS B3 26 and F3 26.

Minutes before starting signal	Visual signal	Sound signal	Means
3	<i>Class flag</i>	<i>One</i>	<i>Warning signal</i>
2	<i>P, U, or black flag</i>	<i>One</i>	<i>Preparatory signal</i>
1	<i>Preparatory flag removed</i>	<i>One long</i>	<i>One minute</i>
0	<i>Class flag removed</i>	<i>One</i>	<i>Starting signal</i>

- 10.6 **[DP]** iQFOiL Course Racing Only. The race committee may signal that boards shall sail on a specific tack during the 10 seconds before and 10 seconds after the starting signal is made, by displaying a green flag for starboard tack or a red flag for port tack, before or with the warning signal.

## 11 CHANGE OF THE NEXT LEG OF THE COURSE

- 11.1 To change the next leg of the course, the race committee will lay a new mark (or move the gate or move the finishing line) and remove the original mark as soon as practicable. When in a subsequent change a new mark is replaced, it will be replaced by an original mark.

## 12 THE FINISH

- 12.1 The finishing line will be between a staff displaying a blue flag on the race committee vessel and either:
- the course side of the nearby inflatable finishing mark, or
  - a staff displaying a blue flag on the nearby race committee vessel.
- 12.2 **[DP]** Boats finishing shall keep clear of boats about to start where reasonably practicable.
- 12.3 For iQFOiL Women, Youth and Junior only, boats which are still deemed to be racing by the race committee but are outside the Finish Window may be scored an allocated place based on their position when the Time Limit expires. Such boats may be directed to return to the start area or other location without crossing the finish line. Neither the allocation of a finish place nor the failure to allocate a finish place will be grounds for redress. This changes RRS 35, RRS 62.1, RRS Appendix A5.1, A5.2 and A10.

## 13 TIME LIMITS AND TARGET TIMES

- 13.1 See SI Addendum D.
- 13.2 If no boat has passed Mark 1 within the Mark 1 Time Limit the race may be abandoned. Failure to meet the target times will not be grounds for protest. This changes RRS 62.1(a).
- 13.3 Boats failing to finish within the time stated in the Finish Window after the first boat starts, sails the course and finishes will be scored Did Not Finish, except as provided for in SI 12.3. This changes RRS 35, RRS Appendix A5.1 and A5.2.

## 14 HEARING REQUESTS

- 14.1 The Organising Authority has appointed an International Jury for this event in accordance with RRS 91. Australian Sailing's approval of this appointment is posted on the ONB. The right of appeal from a protest committee hearing is denied as provided in RRS 70.5.
- 14.2 Protests shall be submitted via the ONB.
- 14.3 For each class, the protest time limit is 60 minutes after the last boat has finished the last race of the day or the race committee signals no more racing today, whichever is the later.
- 14.4 Notices will be posted no later than 30 minutes after the protest time limit to inform competitors of hearings in which they are parties. Hearings will be held at RBYC Committee Room beginning at the time posted. Hearings may be scheduled to begin up to 30 minutes before the end of the protest time limit.
- 14.5 Notices of protests by the race committee, technical committee or jury will be posted to inform boats under RRS 61.1(b).
- 14.6 A list of boats that have been penalized under Appendix P for breaking RRS 42 will be posted.
- 14.7 The Organising Authority has appointed an International Jury for this event.

## 15 SCORING

- 15.1 Three races are required to be completed to constitute a series.
- 15.2 When fewer than five races have been completed, a boat's regatta score will be the total of her race scores.
- 15.3 When five to nine races have been completed, a boat's regatta score will be the total of her race scores excluding her worst score.
- 15.4 When ten or more races have been completed a boat's regatta score will be the total of her race scores excluding her two worst scores.
- 15.5 Formula Kite only. There will be one discard after every five (5) races that are completed.
- 15.6 iQFOil – Slalom Racing
  - a) Races will be conducted in two heats;
    - i) Open Men, and
    - ii) Open Women, Youth and Junior
  - b) Each slalom race will be scored the same as one course race.
- 15.7 Scoring for the Australian Para Sailing Championships will be drawn from the overall fleet results for the 2.4mR class.

## 16 [NP] SAFETY REGULATIONS

- 16.1 **[SP]** Competitors shall wear personal flotation devices in accordance with NOR 1.1 at all times while afloat, except briefly while changing or adjusting clothing or personal equipment.
- 16.2 Numbered bibs will be provided by the organising authority for the Formula Kite competition. Bibs shall be collected from the Race Management Representative at the Kite Beach, worn at all times while racing and returned to the Race Management Representative no later than 30 minutes after the last finisher in, or abandonment of, the last race of the regatta.
- 16.3 Boats not leaving the harbour for a scheduled race shall promptly use the electronic sign on/off system by selecting "Not Sailing Today".
- 16.4 **[SP]** Before leaving to race on each scheduled racing day, a crew shall sign-on electronically using the online sign on/off system.
- 16.5 **[SP]** After returning to shore on each scheduled racing day, a crew shall sign-off electronically using the online sign on/off system within the protest time limit.
- 16.6 Instructions for use of electronic sign on/off system:
  - a) Competitors shall provide a contact mobile phone number on the entry system.
  - b) Competitors will receive a text message prior to the first race containing a link to the sign on system.
  - c) Prior to leaving the shore, competitors shall click on the link, select the "Sign on/off" link in the menu and select either "Sign on" or "Not Sailing Today".
  - d) On returning to shore after racing, competitors shall click on the "Sign Off" link.
  - e) If a competitor is having issues with the sign on/off contact the regatta office or Kite Beach marshal who will manually sign you on/off.

- 16.7 **[DP]** A boat that retires from racing shall notify the race committee before leaving the racing area, or if that is not possible, shall notify the race office as soon as possible after returning ashore and shall complete a retirement declaration in the online notice board before the expiry of the protest time limit.
- 16.8 **[DP]** Boats shall not sail into other course areas whilst the other course areas are racing. Boats not racing shall remain clear of boats that are racing and official boats.
- 16.9 Race Management VHF Channels – See SI Addendum D.
- 16.10 **[DP]** Race officials and race committee vessels may retrieve boat crews and return them to their boats for safety reasons. The sail number of a boat which receives outside help will be notified to the Race Committee with details of the incident and a hearing may be held (if required) to determine any penalty. This changes RRS 41.

## 17 REPLACEMENT OF CREW OR EQUIPMENT

- 17.1 **[DP]** Substitution of competitors will not be allowed without prior written approval of the race committee via the Online Notice Board and shall comply with any restrictions in the Notice of Race.
- 17.2 **[DP]** Substitution of skippers will not be allowed after close of Registration for the applicable class.
- 17.3 **[DP]** Substitution of damaged or lost equipment will not be allowed unless approved by the race committee. Requests for substitution shall be made to the race committee at the first reasonable opportunity via the Online Notice Board. When equipment is substituted during a series of races on the same day, the request shall be made before the protest time limit expires on the day via the online form.

## 18 EQUIPMENT AND MEASUREMENT CHECKS

- 18.1 **[DP] [NP]** Equipment may be inspected at any time for compliance with the class rules and sailing instructions. When instructed by a member of the technical committee, a boat shall proceed immediately to a designated area for inspection.
- 18.2 **[DP]** Penalties for a breach of class rules are at the discretion of the international jury and may be less than disqualification.

## 19 OFFICIAL VESSELS

- 19.1 Official vessels will be marked as follows:

PRO	White Flag with PRO
Race Committee	Course designation – A, B, C or D
Rescue	White flag with RBYC crest
Judges	White Flag with letter J
Media	White Flag with letter M
Equipment Inspection	Flag with letter M or Measurer

- 19.2 Actions by official vessels, drones or helicopters shall not be grounds for requesting redress by a boat. This changes RRS 60.1(b).



# SAIL MELBOURNE

## SAILING INSTRUCTIONS



### 20 [DP] PARA CLASSES HAUL OUT RESTRICTIONS

Para classes boats shall not be hauled out during the event except with and according to the terms of prior written permission of the race committee.

#### ADDENDA

- A. Standard Penalties
- B. Schedule of Races
- C. Course Areas
- D. Courses

#### Standard Penalties

The Race Committee may apply a standard penalty without a hearing, or a discretionary penalty may be applied by the International Jury with a hearing.

The Race Committee may protest a boat if it considers a standard penalty is inappropriate.

SI	SAFETY	
16.1	Not wearing a personal flotation device in accordance with NOR 1.1	One point scoring penalty added to all races in which the infringement occurs
16.4	Not signing on	One point scoring penalty added to the first race of the day
16.5	Not signing off	One point scoring penalty added to the last race of the day

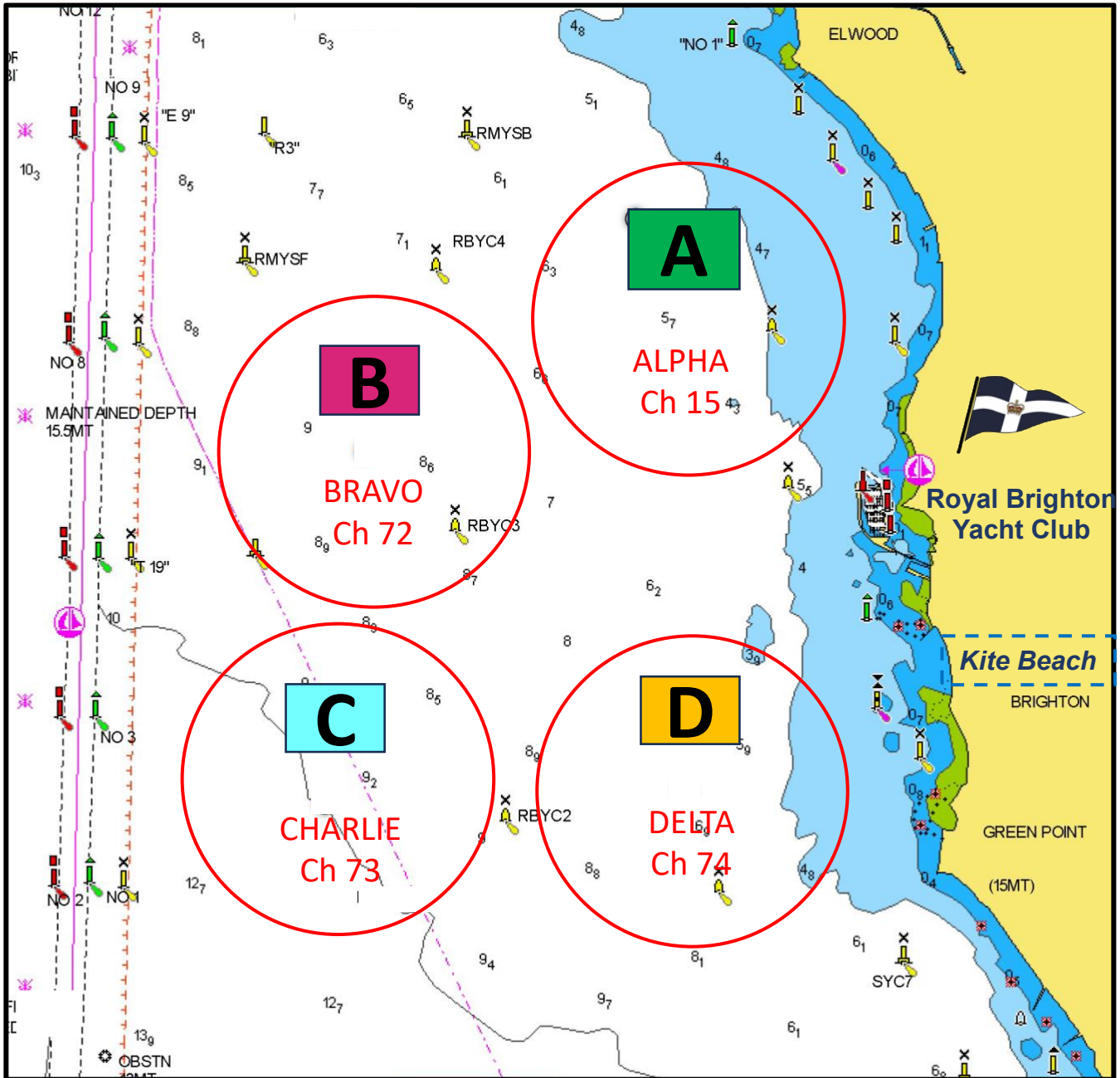


### SCHEDULE OF RACES

CLASS			Thu 28 Nov	Fri 29 Nov	Sat 30 Nov	Sun 1 Dec
2.4mR	<b>ALPHA</b> RYCV RMYS	Races			Up to 3 races	Up to 3 races
Liberty		Warning			1300	
Hansa		Races			Up to 3 races	Up to 3 races
		Warning			1300	
Tasar		Races			Up to 3 races	Up to 3 races
		Warning	1300			
Opti - Open		Races	Up to 3 races	Up to 3 races		
		Warning	1300			
Opti - Inter		Races	Up to 3 races	Up to 3 races		
		Warning	1300			
ILCA 4	<b>BRAVO</b> RBYC	Races	Up to 3 races	Up to 3 races	Up to 3 races	Up to 3 races
ILCA 6		Warning	1300			
ILCA 7						
470	<b>CHARLIE</b> MSC	Races	Up to 3 races	Up to 3 races	Up to 3 races	Up to 3 races
		Warning	1300			
29er		Races			Up to 3 races	Up to 3 races
		Warning			1300	
RS100		Races			Up to 3 races	Up to 3 races
		Warning			1300	
iQFOIL	<b>DELTA</b> BRYC	Races	Up to 4 races	Up to 4 races	Up to 4 races	Up to 4 races
		Warning	1330			
KiteFoil		Races	Up to 5 races	Up to 5 races	Up to 5 races	Up to 5 races
		Warning	1300			

Times of the first warning signal on subsequent days will be promulgated by a Notice to Competitors on the ONB by 2000 on the day before it will take effect.

### COURSE AREAS



## ALPHA Course – VHF 15

### Classes

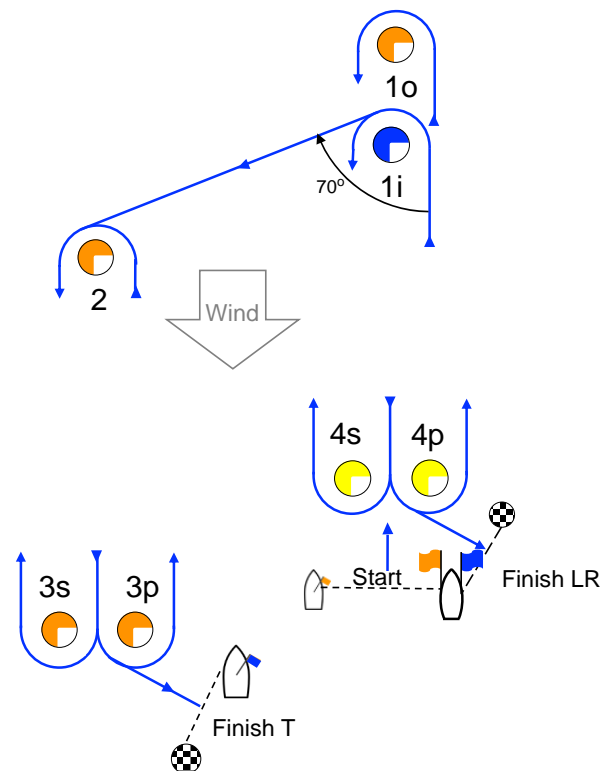
Class	Class Insignia	B'ground Colour	Finish Time Limit	Mark 1 Time Limit	Finish Window	Target Time
<b>ALL CLASSES</b>	<b>A</b>					
<b>2.4mR</b>	2.4mR	Yellow	60	25	15	40
<b>Liberty / Hansa</b>	Liberty	Purple	60	25	15	40
<b>Tasar</b>	Tasar	White	60	15	15	45
<b>Optimist - Open</b>	Opti Blue	White	55	20	15	35
<b>Optimist - Intermediate</b>	Opti White	Blue	50	20	15	30

### Description of Marks

Start pin	Race vessel or orange buoy
Finish pins	Black & White check buoy
Mark 1i	Blue Buoy
Mark 1o	Orange Buoy
Mark 2	Orange Buoy
Mark 3p/3s	Orange Buoy
Mark 4p/4s	Yellow Buoy

### Courses

Class	Mark Rounding Order
<b>Tasar</b>	Start – 1o – 4s/4p – 1o – 4p – Finish LR
<b>2.4mR, Liberty/Hansa</b>	Start – 1i – 4s/4p – 1i – 4p – Finish LR
<b>Optimist - Open</b>	Start – 1i – 2 – 3s/3p – 2 – 3p – Finish T
<b>Optimist - Intermediate</b>	Start – 1i – 2 – 3p - Finish T



### BRAVO Course – VHF 72

#### Classes

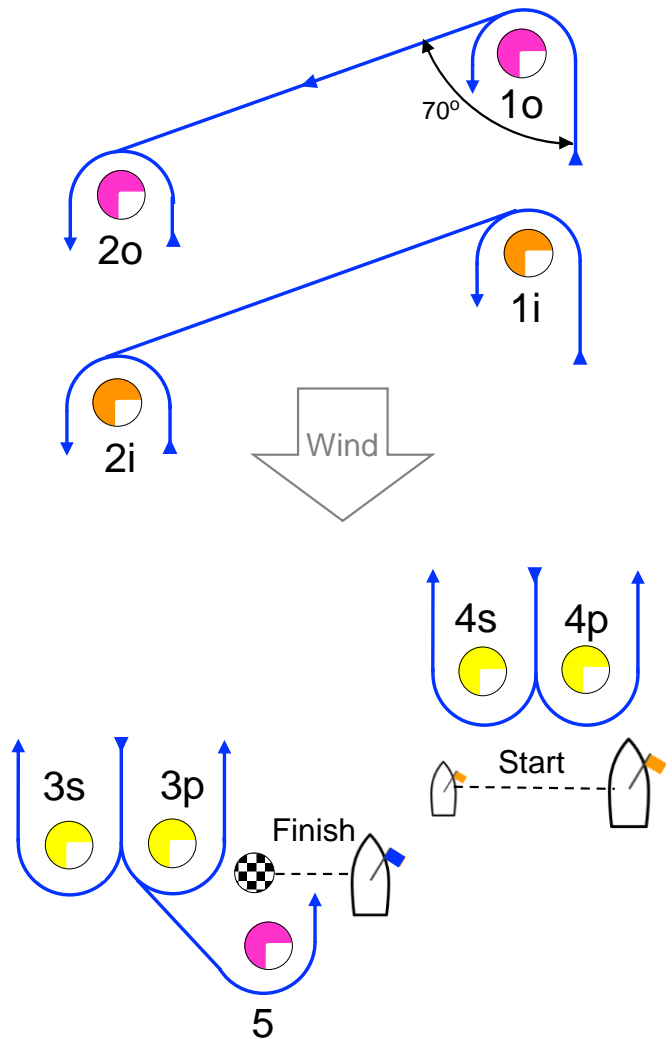
Class	Class Insignia	B'ground Colour	Finish Time Limit	Mark 1 Time Limit	Finish Window	Target Time
<b>ALL CLASSES</b>	<b>B</b>					
<b>ILCA 4</b>	ILCA	Yellow	75	20	15	50
<b>ILCA 6</b>	ILCA	Green	75	20	15	50
<b>ILCA 7</b>	ILCA	White	75	20	15	50

#### Description of Marks

Start pin	Orange buoy or Race Vessel
Finish pin	B&W Check Buoy
Mark 1i	Orange Buoy
Mark 1o	Pink Buoy
Mark 2i	Orange Buoy
Mark 2o	Pink Buoy
Marks 3p/3s	Yellow Buoy
Marks 4p/4s	Yellow Buoy
Mark 5	Pink Buoy

#### Courses

Class		Mark Rounding Order
ILCA 4	I2	Start – 1i – 4p/4s – 1i – 2i – 3p – 5 – Finish
	O2	Start – 1i – 2i – 3p/s – 2i – 3p – 5 – Finish
ILCA 6	I2	Start – 1o – 4p/4s – 1o – 2o – 3p – 5 – Finish T
	O2	Start – 1o – 2o – 3p/3s – 2o – 3p – 5 – Finish T
ILCA 7	I2	Start – 1o – 4p/4s – 1o – 2o – 3p – 5 – Finish T
	O2	Start – 1o – 2o – 3p/3s – 2o – 3p – 5 – Finish T



### CHARLIE Course – VHF 73

#### Classes

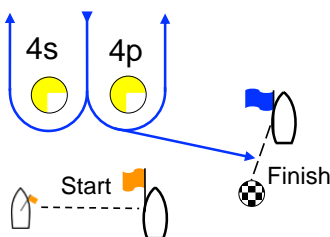
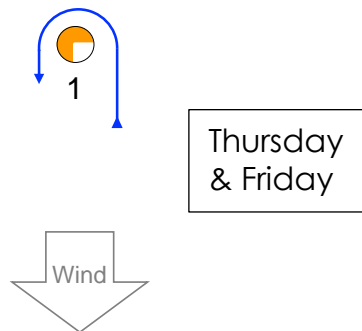
Class	Class Insignia	B'ground Colour	Finish Time Limit	Mark 1 Time Limit	Finish Window	Target Time
<b>ALL CLASSES</b>	<b>C</b>					
<b>470</b>	470	Blue	60	25	15	40
<b>29er</b>	29er	Red	50	20	10	30
<b>RS100</b>	RS100	White	60	15	15	40

#### Description of Marks

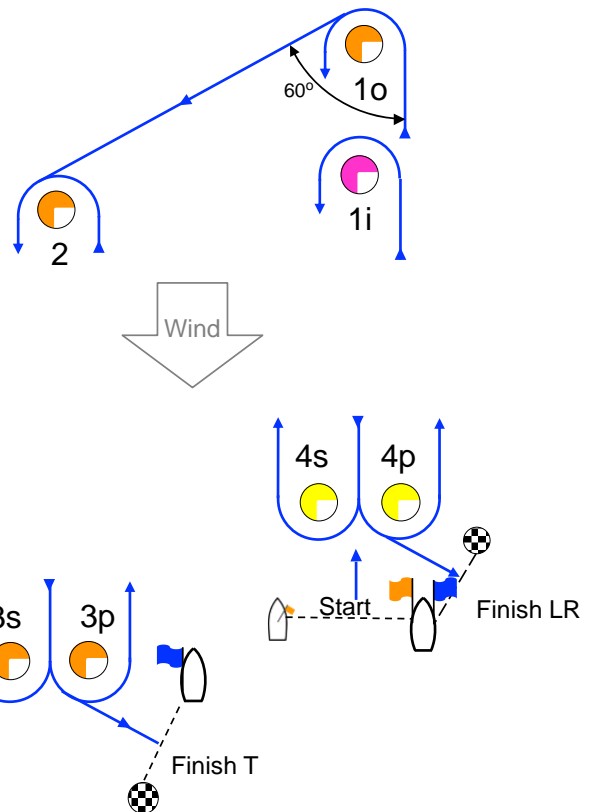
		Change Mark
Start pin	Race vessel	
Finish pins	B&W check buoy	
Mark 1i	Pink Buoy	Pink Buoy with black band
Mark 1 and 1o	Orange Buoy	Green Buoy with black band
Mark 2	Orange Buoy	
Mark 3p/3s	Orange Buoy	
Mark 4p/4s	Yellow Buoy	

#### Courses

Class	Days	Mark Rounding Order
470	Thu/Fri	Start – 1 – 4s/4p – 1 – 4p – Finish
	Sat/Sun	Start – 1o – 2 – 3s/3p – 2 – 3p – Finish T
RS100	Sat/Sun	Start – 1o – 4s/4p – 1o – 4p – Finish LR
29er	Sat/Sun	Start – 1i – 4s/4p – 1i – 4p – Finish LR



Saturday & Sunday



### DELTA Course – VHF 74

#### Classes

Class	Class Insignia	B'ground Colour	Finish Time Limit	Mark 1 Time Limit	Finish Window	Target Time
<b>ALL CLASSES</b>	<b>D</b>					
<b>iQFOIL Men</b>	White	Red				
<b>iQFOIL Women</b>	Red	White				
<b>iQFOIL Youth / Junior</b>	White	Blue				
	<b>Course Racing</b>		23		6	16
	<b>Sprint Slalom</b>		7		4	4-5
<b>Formula Kite</b>	White	Blue	20	10	10	10

#### Description of Marks

##### iQFOiLs – Windward/Leeward

Start pin	Orange buoy or RCV
Finish pin	Black & White buoy
Mark 1	Pink Buoy
Mark 1i	Yellow Buoy
Marks 4P & 4S	Yellow Buoy

Signal	Mark Rounding Order
LR2*	Start – 1 – 4s/4p – 1 – 4p – Finish
LR3*	Start – 1 – 4s/4p – 1 – 4s/4p – 1 – 4p – Finish

\* iQFOIL Women, Youth and Junior to round Mark 1i, NOT 1

##### iQFOiLs – Trapezoid

Start pin	Orange buoy or RCV
Finish pin	Black & White buoy
Mark 1	Orange Buoy
Mark 2	Orange Buoy
Marks 3p & 3s	Yellow Buoy
Marks 4p & 4s	Yellow Buoy

Signal	Mark Rounding Order
I2	Start – 1 – 4s/4p – 1 – 2 – 3p – Finish
O2	Start – 1 – 2 – 3s/3p – 2 – 3p – Finish

\* Marks 4p/4s may not be laid if course O2 is being sailed

##### iQFOiL - Slalom

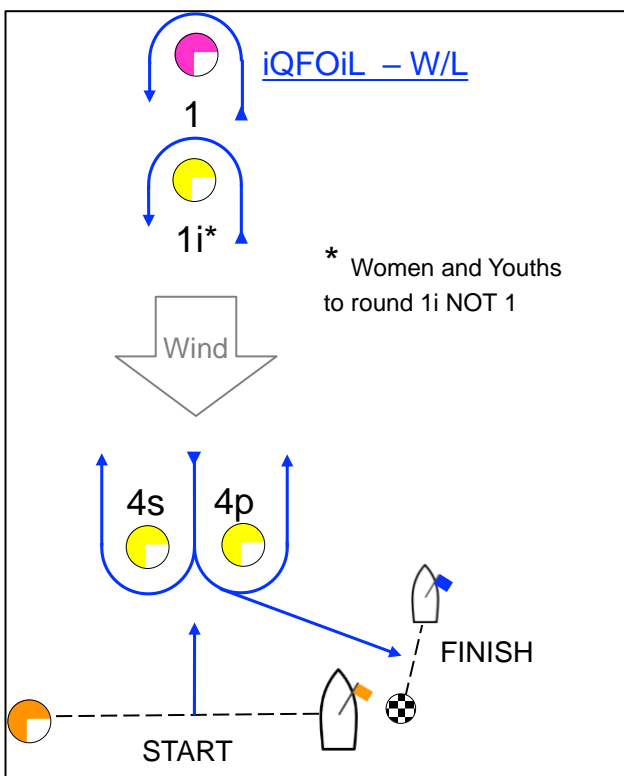
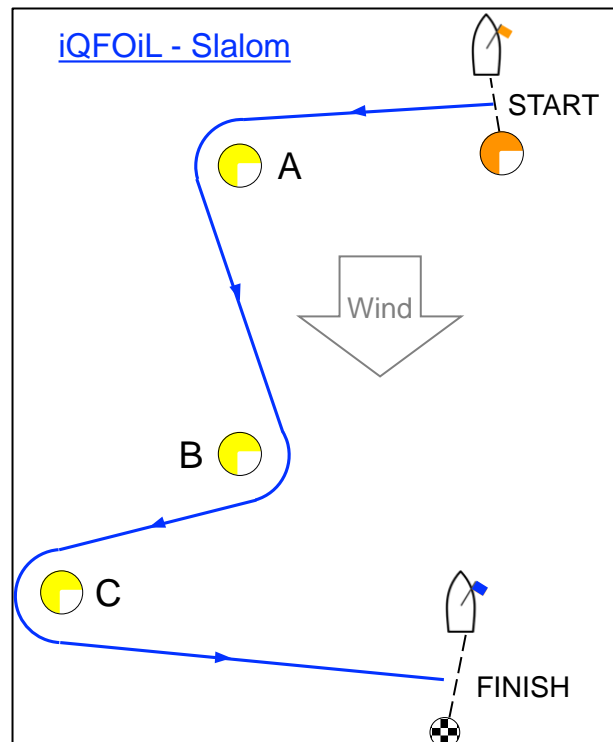
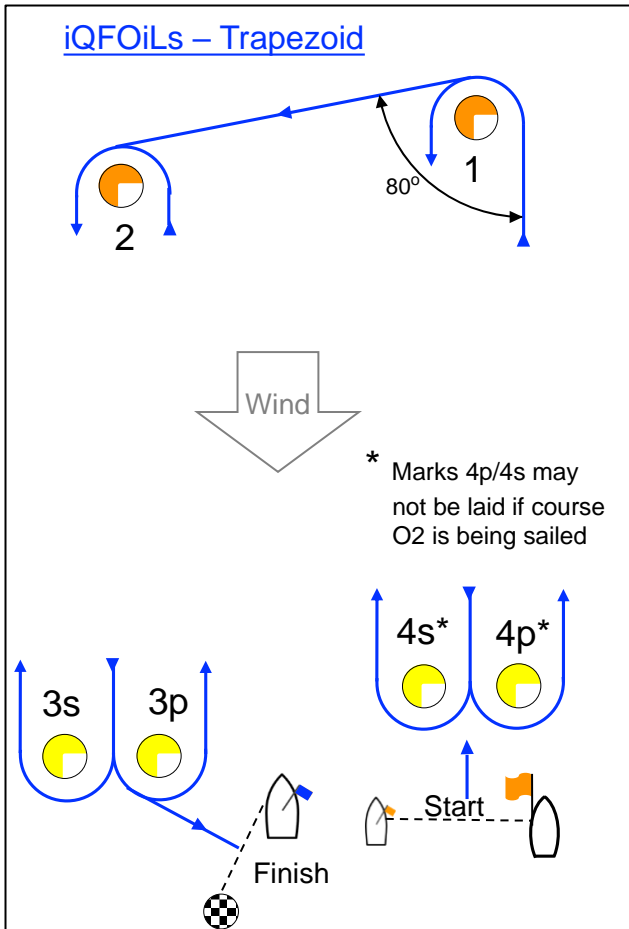
Start pin	Orange buoy
Finish Pin	Black & White buoy
Marks A, B & C	Yellow Buoy

Signal	Mark Rounding Order
S4	Start – A – B – C – Finish

##### Formula Kite

Start pin	Orange buoy
Finish Pin	Black & White buoy
Mark 1	Pink buoy
Marks 4 & 5	Yellow buoy
Mark P	Yellow buoy

Mark Rounding Order
Start – Pp – 1p – Pp – 4s – Pp – 1p – Pp – 4s – 5p – Finish



### Formula Kites - XS

